



Friday, January 9, 2026

Town of Fraser
Public Works Operations Facility
CMAR Services Interview



Meet The Team

ADDITIONAL RESOURCES



Dave Purdy
Asst. Superintendent



Heather Gutierrez
Safety Manager



Randy Totsch
Quality Manager
Public Works Facility Expert



Rob Neiberger
Principal In Charge



Davis Carey
Construction Manager
Main Point of Contact



Will Valkner
Sr. Preconstruction
Manager



Sam Griffith
Project Manager



Nate Lucht
General Superintendent



Grayson Long
Superintendent

CORE TEAM

Your *Trusted* Partner



BIG VALLEY

CONSTRUCTION



Your *Trusted* Partner



Best of Both Worlds: Big Valley Led, JHL Supported Partnership

- ✓ 25 Years of Relationships & Trust
- ✓ Additional Capacity with JHL
 - ✓ A Big Valley Led Team with JHL Support & Resources at No Additional Cost – ***Actual Savings***
- ✓ Experience Building in Fraser Valley, Plus Technical Knowledge of Municipal Projects
- ✓ Commitment to Community Values
- ✓ Stewardship of Our Word & Long Term Commitment

Mountain Construction Expertise



Key Benefits of Big Valley —

LOCAL MONEY STAYS LOCAL



Key Benefits of Big Valley / JHL Partnership



- ✓ Self Perform Capabilities
- ✓ NUCOR PEMB Dealer
- ✓ Trade Partner Relationships in the Valley
- ✓ Local AHJ Presence
- ✓ Experience with D2C on Multiple Projects



Similar Projects

25 Years of Big Valley Construction



Fraser Recreation Center



Granby Town Hall



Grand County Judicial Center

Similar Projects



Grand County EMS



East Grand Fire South Station



Certainty of Outcome

Similar Projects

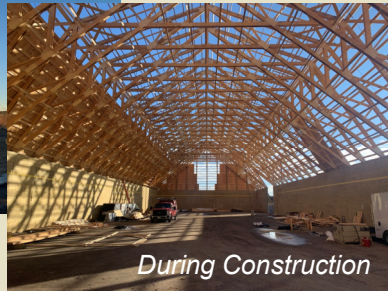


2025 Project
of the Year

E-470 Central Maintenance Facility



Salt Barn



During Construction



After Construction



Maintenance Building



Admin Space



Fuel Island



Cold Storage



Approach to Collaboration



Fraser Public Works
Scope Adjustment Log
8/25/2025

Current Base Cost Model Value	\$28,846,549
Value of Accepted Scope Adjustments	\$0
Total Value w/ Accepted Scope Adjustments	\$28,846,549

Item #	Description	Value	Code	(1) Pending Deduct	(2) Pending Add	(3) Accepted Value	(4) Rejected Value	Decision Date	Comments
1-Multi-Trade Options									
1-1	Eliminate (1) Bay from Vehicle Cold Storage	\$ (56,569)	1	-\$56,569	\$0	\$0	\$0		
1-2	Eliminate (1) Maintenance Bay	\$ (230,619)	1	-\$230,619	\$0	\$0	\$0		
1-3	Eliminate (1) Bay from Heated Vehicle Storage	\$ (124,461)	1	-\$124,461	\$0	\$0	\$0		
1-4		\$ -		\$0	\$0	\$0	\$0		
8.2-Overhead Doors									
8.2-1	Eliminate (1) of the Salt Barn Overhead Doors	\$ (75,296)	1	-\$75,296	\$0	\$0	\$0		
8.2-2		\$ -		\$0	\$0	\$0	\$0		
8.3-Storefronts and Windows									
8.3-1	Change the Kallwall Translucent Panels to Uniquad Panels by Kingspan	\$ (73,848)	1	-\$73,848	\$0	\$0	\$0		
8.3-2		\$ -		\$0	\$0	\$0	\$0		
9.4-Flooring									
9.4-1	Change the Burnished, Densified, and Sealed Concrete Floors to Only Sealed Concrete Floors	\$ (82,884)	1	-\$82,884	\$0	\$0	\$0		
9.4-2		\$ -		\$0	\$0	\$0	\$0		
9.5-Painting and Wallcovering									
9.5-1		\$ -		\$0	\$0	\$0	\$0		
9.5-2		\$ -		\$0	\$0	\$0	\$0		
10-Specialties									
10-1	Eliminate Monument Sign (Only Building Mounted Signage)	\$ (86,880)	1	-\$86,880	\$0	\$0	\$0		
10-2		\$ -		\$0	\$0	\$0	\$0		
21-Fire Suppression									
21-1	Eliminate Fire Suppression System in Salt Barn	\$ (59,658)	1	-\$59,658	\$0	\$0	\$0		
21-2		\$ -		\$0	\$0	\$0	\$0		
22-Plumbing									
22-1		\$ -		\$0	\$0	\$0	\$0		
22-2		\$ -		\$0	\$0	\$0	\$0		
23-HVAC									
23-1	Eliminate Dust Collector	\$ (347,520)	1	-\$347,520	\$0	\$0	\$0		
23-2		\$ -		\$0	\$0	\$0	\$0		
26-Electrical									
26-1		\$ -		\$0	\$0	\$0	\$0		
26-2		\$ -		\$0	\$0	\$0	\$0		
32.1-Asphalt Paving									
32.1-1		\$ (888,782)	1	-\$888,782	\$0	\$0	\$0		
32.1-2		\$ -		\$0	\$0	\$0	\$0		
32.2-Site Concrete									
32.2-1	Change the Material Storage Bin from Cast-In Place Concrete to Stacked Concrete Blocks	\$ (53,414)	1	-\$53,414	\$0	\$0	\$0		
32.2-2		\$ -		\$0	\$0	\$0	\$0		
33-Utilities									
33-1		\$ -		\$0	\$0	\$0	\$0		
33-2		\$ -		\$0	\$0	\$0	\$0		
				-\$2,079,931	\$0	\$0.00	\$0		

Approach to Collaboration ---



Key Team Members Availability



Rob Neiberger
Principal In Charge

*Fully Committed
to Team Success*



Davis Carey
Construction
Manager

*Daily
Involvement*



Will Valkner
Sr. Preconstruction
Manager

*Available
Immediately for
Precon Services*



Nate Lucht
General
Superintendent

*Daily
Involvement*



Grayson Long
Superintendent

*Ready Starting
May 1st*



Sam Griffith
Project Manager

*Perfect Timing
After Summit
County Transit*

***We Are 100% Committed to the Success of the
Fraser Public Works Operations Facility***

Why Big Valley?

- Yes We're Local – But Not a Given to Us
 - Anything but **Complete Success** is Not an Option
- The Perfect Partner for This Project:
 - Technical Expertise
 - The Perfect Size – Gets our Full Attention
- We're Here for the Long Haul



THANK YOU!

BIG VALLEY
CONSTRUCTION

Site Logistics

