

# 2025 CAPITAL PROJECTS RECAP



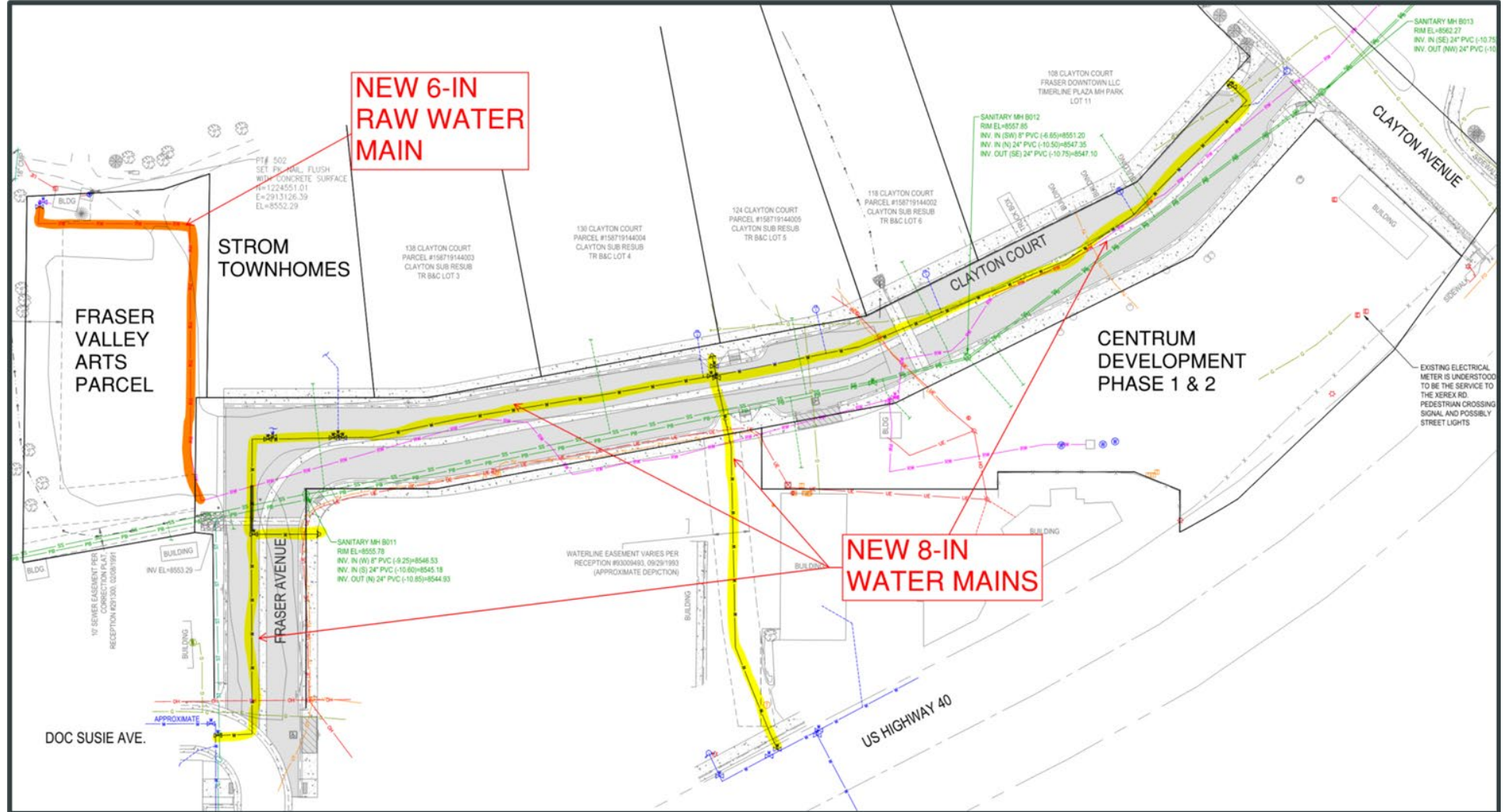
# 2025 Capital Projects Recap

- CLAYTON COURT
  - WATER MAIN CONSTRUCTION
  - UTILITIES COORDINATION
  - STREETScape DESIGN AND BID
- SIDEWALKS: NORGRN ROAD, EISENHOWER DRIVE & SELECT LOCATIONS
- TOWNHALL IMPROVEMENTS
- CHURCH RENOVATION
- S. WAPITI BRIDGE CULVERT REHABILITATION
- ELK RANCH ROAD INTERCONNECT VALVE
- QUAIL WATER MAIN LOOP



# CLAYTON COURT

Water Utilities Completed: New Water Main, Raw Water Main, Hydrant Relocations



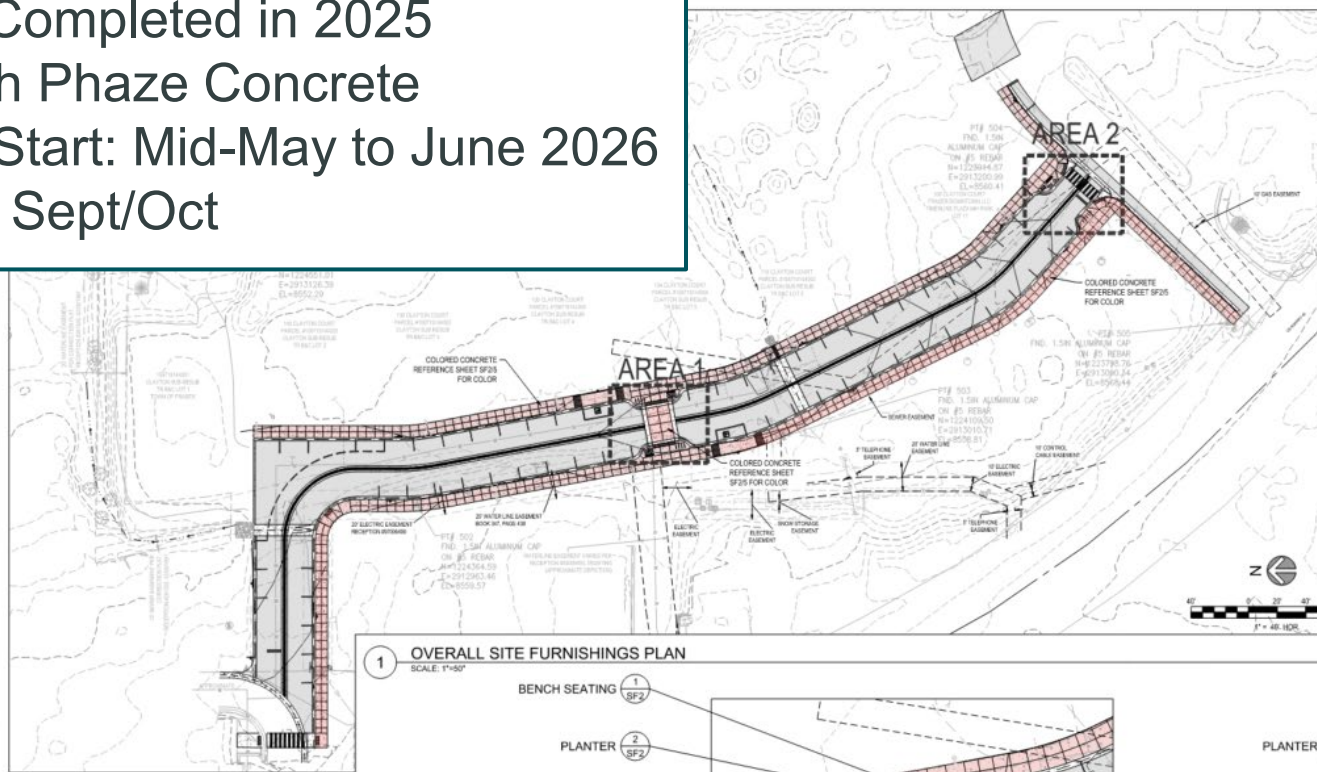




# CLAYTON COURT

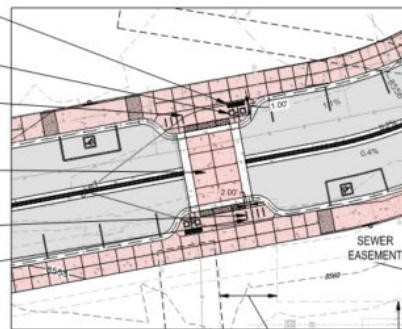
## STREETSCAPE

- Design/Bid Completed in 2025
- Contract with Phaze Concrete
- Anticipated Start: Mid-May to June 2026
- Completion: Sept/Oct



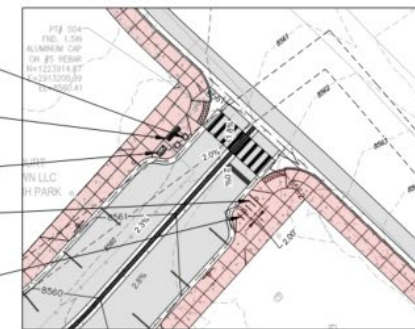
1 OVERALL SITE FURNISHINGS PLAN  
SCALE: 1"=50'

- BENCH SEATING ① SF2
- PLANTER ② SF2
- CHARCOAL BIKE RACK (REF. DETAIL FOR COLOR LAYOUT)
- RAISED CROSSWALK ③ D2
- BIKE RACK ④ SF2
- CHARCOAL BIKE RACK (REF. DETAIL FOR COLOR LAYOUT)



1 AREA 1  
SCALE: 1"=20'

- PLANTER ② SF2
- BENCH SEATING ① SF2
- TRASH CONTAINER ③ SF2
- CHARCOAL BIKE RACK (REF. DETAIL FOR COLOR LAYOUT)
- BIKE RACK ④ SF2



2 AREA 2  
SCALE: 1"=20'



Sidewalk Preview At Strom



# NORGREN SIDEWALKS PROJECT



- Improved Old Town Walk-ability
  - Particularly to the school
- New Sidewalk at Brewery
- Replaced/New Sidewalk at Winery and Camber
- New Curb/Gutter at Rec. Center
- Stormwater Basin Improvement



# NORGREN SIDEWALKS PROJECT





# Town Hall Improvements

- ADA Compliant Ramp and Entrance
- Snow Shedding Roof Gable
  - (Bonus: Asbestos Abatement)
- Handrail
- Paving



# Church Renovation

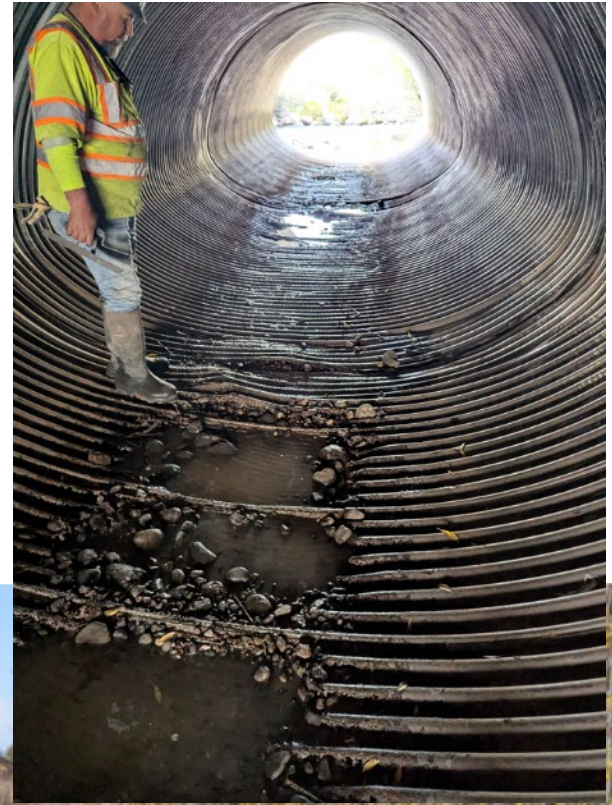
- Kitchen and Bathrooms Renovation
- Structural Roof Upgrades to Current Code
- Code Compliant Water Service Entrance
- Custodial Closet
- Storage Area
- Office Space
- Entrance Foyer





# S. WAPITI CULVERT - BEFORE

- Severe Corrosion
- Flow Bypassing
- Culvert Leaking
- Erosion
- CDOT Action List





# S. WAPITI CULVERT - DURING



- Redirect River
- Void Grouting
- Cement Mat/Liner (Culvert #3)
- Headwall Abutment Armoring





# S. WAPITI CULVERT - AFTER





# ELK RANCH RD PRV PROJECT

## PURPOSE:

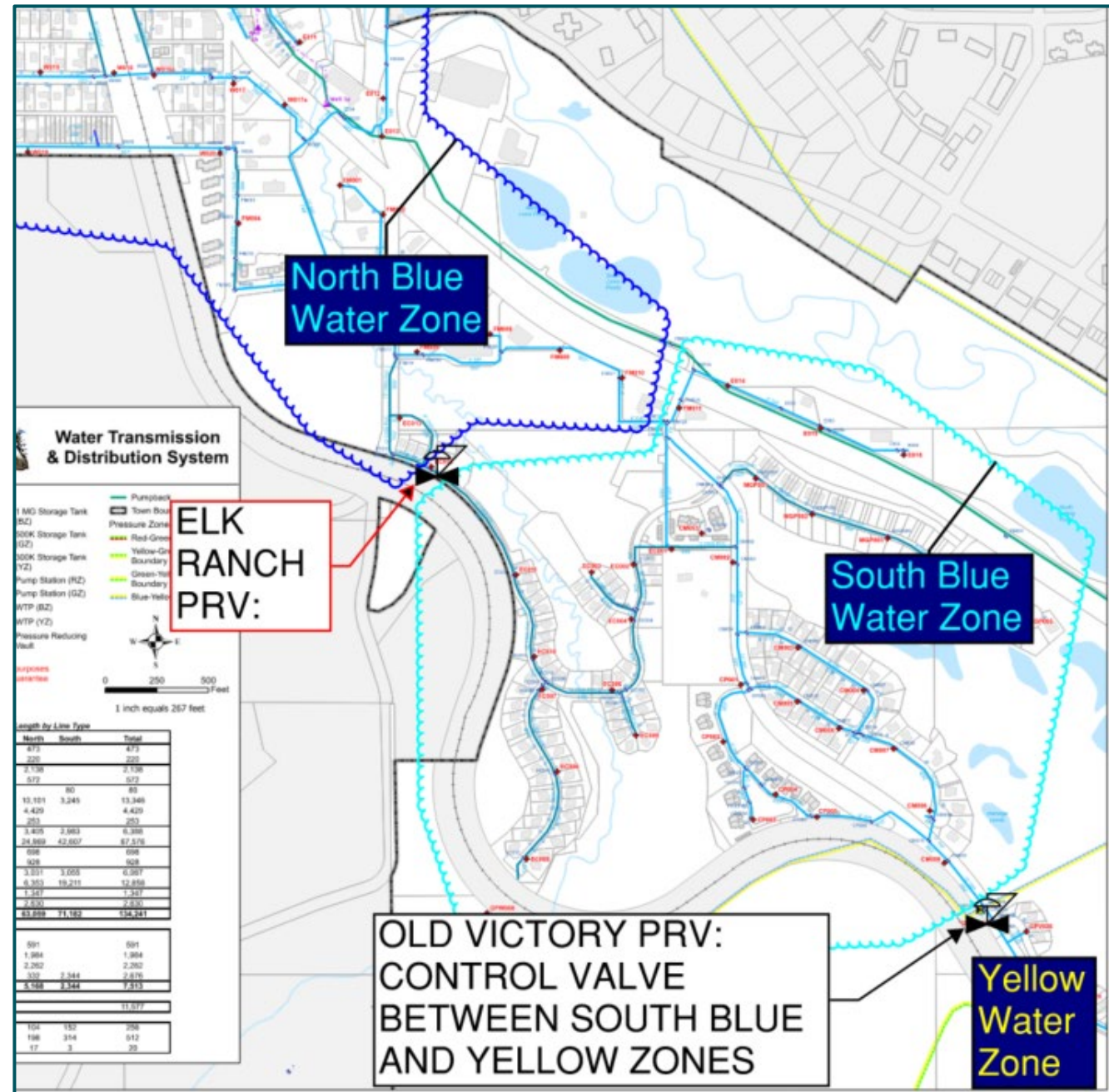
Provide water supply across normally separated pressure zones.

## SCOPE:

- Concrete Vault
- Isolation Valves
- Automatic Control Valve

## BENEFITS:

- Water Supply Reliability
- Separation of Water Rights Supply



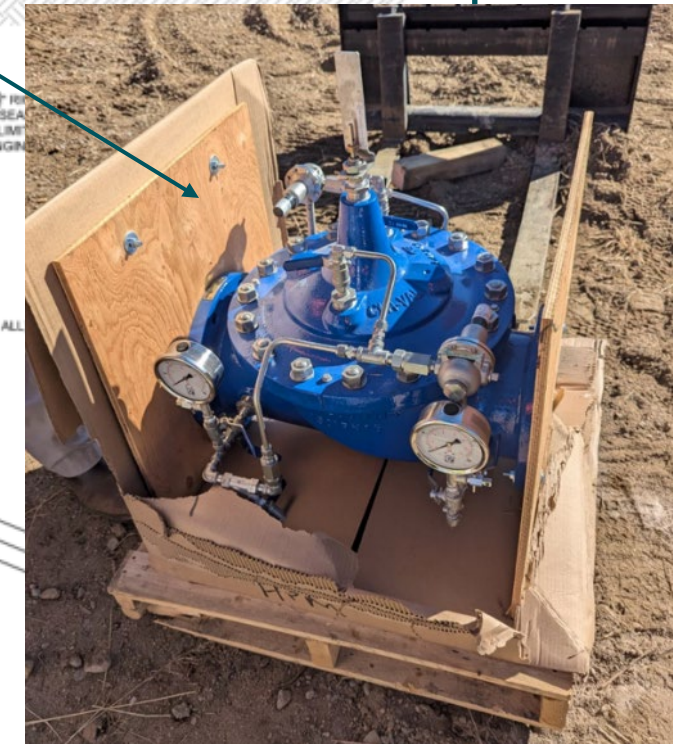
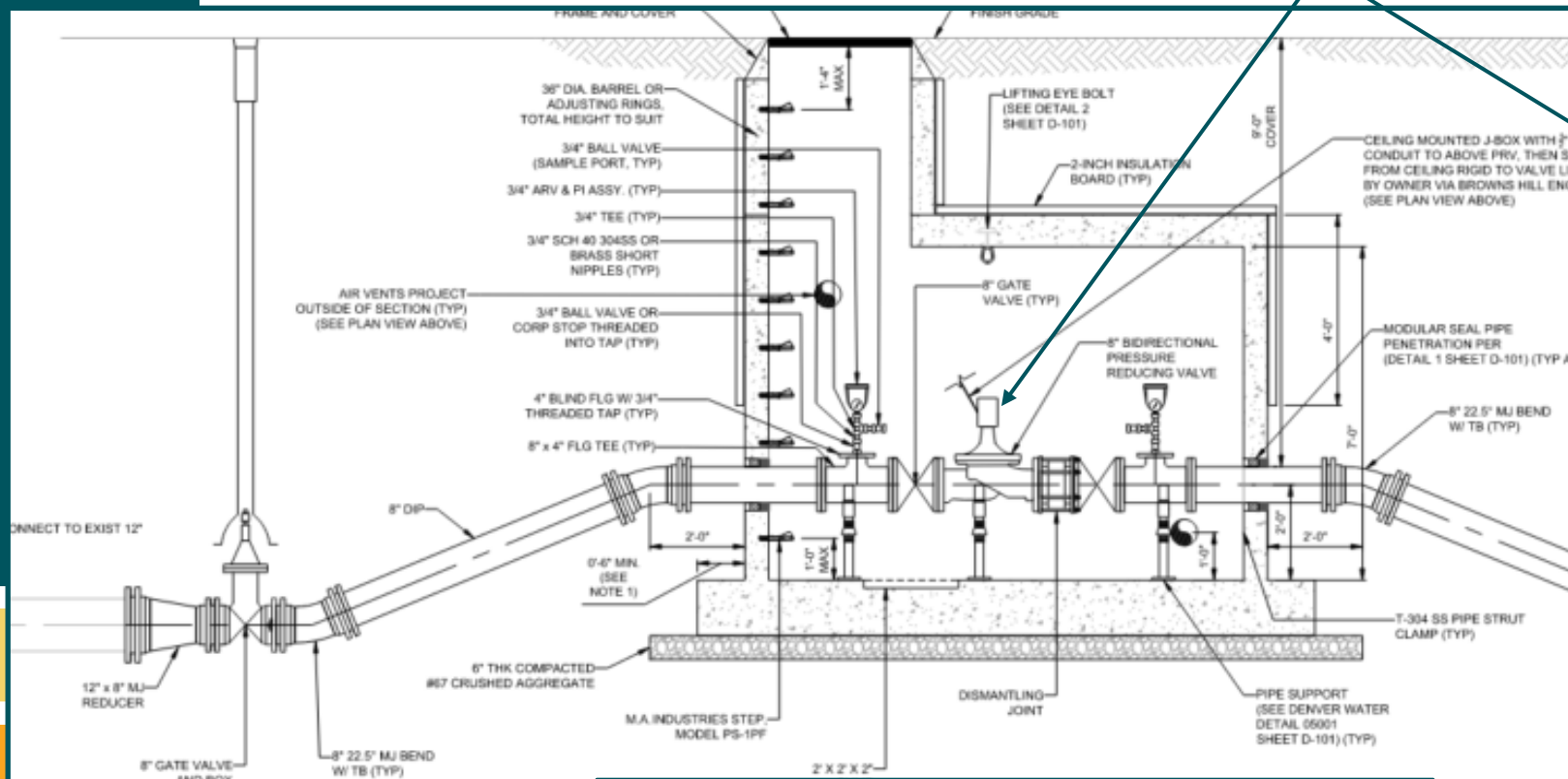


# ELK RANCH RD PRV PROJECT

## Bi-Directional, Pressure-Controlled, Automatic Valve:

Normally closed valve isolates/separates the South Blue and North Blue Water Zones.

If either zone has a pressure drop, the valve will open to supply water from higher to lower pressure zone.



**Cross Section View:  
Concrete Vault, Valves, and Piping**

REDUCER,  
FOSTER TO 8\" 22.5\" BEND

EXISTING PH TEE  
(SEE SITE PLAN)



# ELK RANCH RD PRV PROJECT

