

Unofficial Copy

CORRECTION PLAT

FINAL PLAT

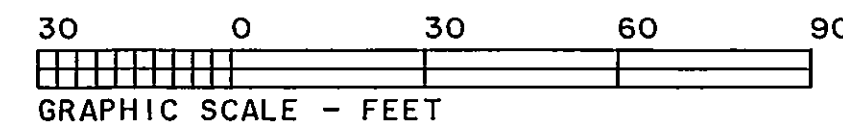
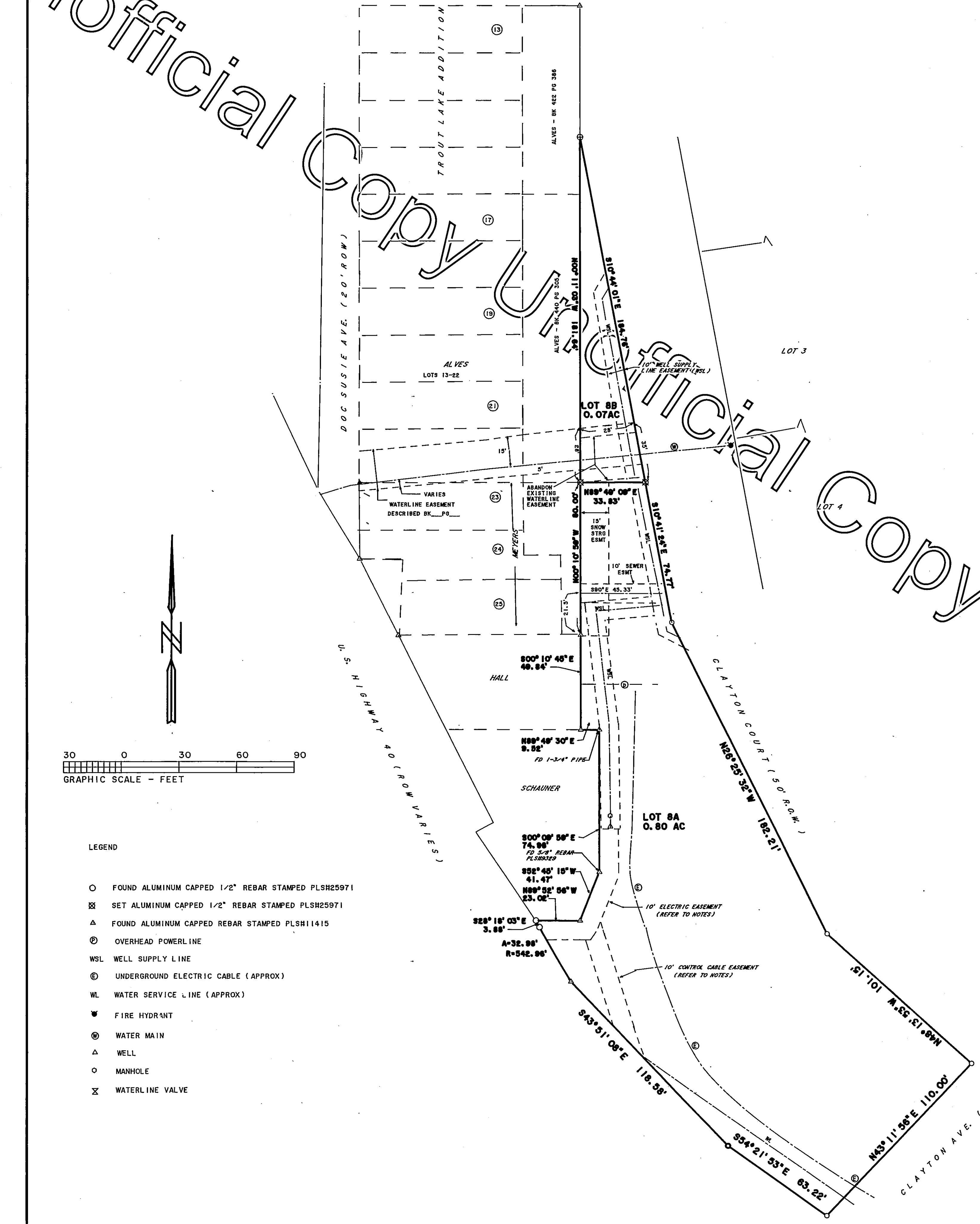
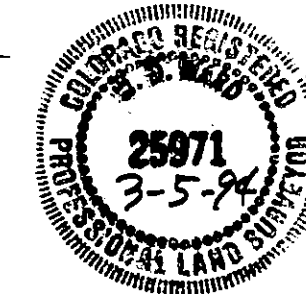
A SUBDIVISION OF LOT 8, REC. NO. 291300
OF A RE-SUBDIVISION OF TRACTS BI AND C
OF CLAYTON SUBDIVISION, REC. NO. 249237
AND PORTIONS OF TROUT LAKE MINING AND HEALTH RESORT CO. LOTS 4-13
AND 33-38 AS VACATED. TOWN OF FRASER, GRAND COUNTY, COLORADO.

TO CORRECT TYPOGRAPHICAL ERROR IN FINAL PLAT
AT RECEPTION NO. 93008440.

SAID TYPOGRAPHICAL ERROR OF DIMENSIONS IN LOT 8A ARE HEREBY
CORRECTED TO PRESERVE ORIGINAL BOUNDARY LINES AS INTENDED BY
SUBDIVISION APPLICANT. NO OFFICIAL CHANGE IN ACREAGE OF LOT 8A OR
OF ANY ORIGINAL LOT LINES HAVE OCCURED. ALL NOTES, SIGNATURES AND
SUBDIVISION LINES OF THE EXECUTED FINAL PLAT AT RECEPTION
NO. 93008440 REMAIN UNCHANGED AND IN FULL EFFECT.

THIS CORRECTION PLAT WAS PREPARED FOR CHARLES E. CLAYTON, AND SHOWS THE RESULTS OF A FIELD SURVEY DONE UNDER MY DIRECTION, RESPONSIBILITY AND CHECKING.

WARREN D. WARD, COLORADO PLS#25971
FOR ROCKY MOUNTAIN ENGINEERS, INC.



LEGEND

- FOUND ALUMINUM CAPPED 1/2" REBAR STAMPED PLS#25971
- ⊗ SET ALUMINUM CAPPED 1/2" REBAR STAMPED PLS#25971
- ▲ FOUND ALUMINUM CAPPED REBAR STAMPED PLS#11415
- ⊙ OVERHEAD POWERLINE
- WSL WELL SUPPLY LINE
- ⊕ UNDERGROUND ELECTRIC CABLE (APPROX)
- WL WATER SERVICE LINE (APPROX)
- ⊕ FIRE HYDRANT
- ⊙ WATER MAIN
- ▲ WELL
- MANHOLE
- ⊗ WATERLINE VALVE

ROCKY MOUNTAIN ENGINEERS, INC. PLANNING--ENGINEERING--SURVEYING CONSTRUCTION MANAGEMENT BOX 545 KREMMLING, COLORADO (303) 724-9500		94003832	
		STATE OF COLORADO County of GRAND for record 5-21 1994 4:56 PM SARAH ROSENE 1000 PD	
CORRECTION PLAT FINAL PLAT A SUBDIVISION OF LOT 8, REC. No. 291300 OF A RE-SUBDIVISION OF TRACTS BI AND C OF CLAYTON SUBDIVISION, REC. No. 249237 AND PORTIONS OF TROUT LAKE MINING AND HEALTH RESORT CO. LOTS 4-13 AND 33-38 AS VACATED. TOWN OF FRASER, GRAND COUNTY, COLORADO.		SCALE: 1"=150' DATE: 05/01/94 DRAWN BY: WDW APPROVED BY: [Signature] REVISED:	SHEET 1 OF 1
CRD 6073-7, SCR# 6073-9 LAY 41-46-48		JOB NO. 6073-9	