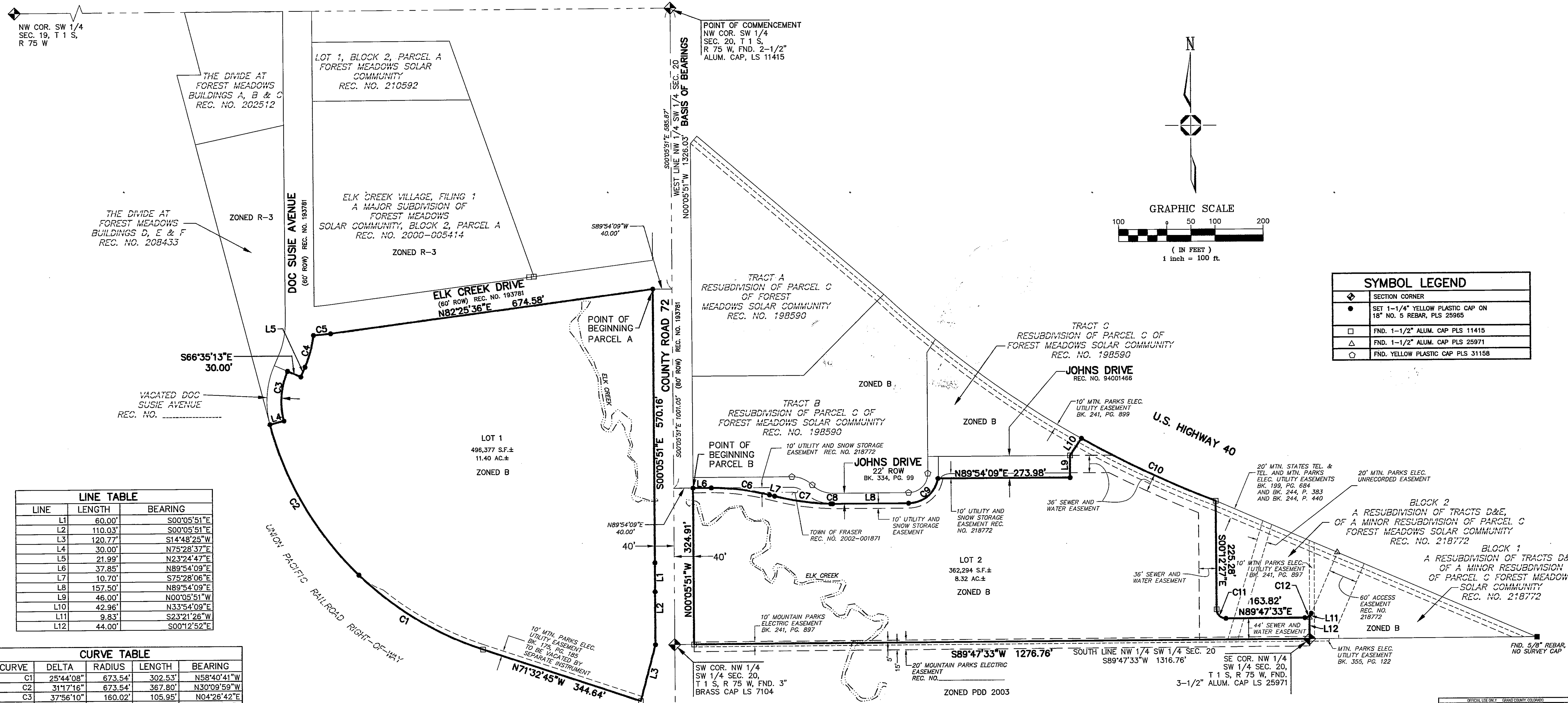


MINOR SUBDIVISION – FINAL PLAT MEYER SUBDIVISION

A RESUBDIVISION OF LOTS 1, 2, 3, 4, AND 5, A RESUBDIVISION OF PARCEL B, FOREST MEADOWS SOLAR COMMUNITY, RECEPTION NO. 218775,
PART OF PARCEL A, FOREST MEADOWS SOLAR COMMUNITY, RECEPTION NO. 193781, BLOCK 3 AND BLOCK 4,
A RESUBDIVISION OF TRACT D AND E, FOREST MEADOWS SOLAR COMMUNITY, RECEPTION NO. 218772, AND
PART OF VACATED DOC SUSIE AVENUE, LOCATED IN THE SOUTHEAST QUARTER OF SECTION 19 AND
THE SOUTHWEST QUARTER OF SECTION 20, TOWNSHIP 1 SOUTH, RANGE 75 WEST,
SIXTH PRINCIPAL MERIDIAN, TOWN OF FRASER, COUNTY OF GRAND, STATE OF COLORADO

SHEET 2 OF 2



LINE	LENGTH	BEARING
L1	60.00'	S00°05'51"E
L2	110.03'	S00°05'51"E
L3	120.77'	S14°48'25"W
L4	30.00'	N75°28'37"E
L5	21.99'	N23°24'47"E
L6	37.85'	N89°54'09"E
L7	10.70'	S75°28'06"E
L8	157.50'	N89°54'09"E
L9	46.00'	N00°05'51"W
L10	42.96'	N33°54'09"E
L11	9.83'	S23°21'26"W
L12	44.00'	S00°12'52"E

CURVE	DELTA	RADIUS	LENGTH	BEARING
C1	25°44'08"	673.54'	302.53'	N58°40'41"W
C2	31°17'16"	673.54'	367.80'	N30°09'59"W
C3	37°56'10"	160.02'	105.95'	N04°26'42"E
C4	16°31'50"	237.90'	68.64'	N15°08'52"E
C5	04°07'49"	493.39'	35.57'	N84°29'00"E
C6	14°25'12"	484.45'	121.92'	S82°46'58"E
C7	12°56'08"	522.44'	117.95'	S81°56'10"E
C8	02°55'40"	81.75'	4.18'	S88°38'02"E
C9	79°47'00"	62.00'	86.33'	N50°00'39"E
C10	08°27'37"	2083.70'	307.68'	S64°37'58"E
C11	90°00'00"	19.00'	29.85'	S45°12'27"E
C12	66°28'33"	15.00'	17.40'	N56°33'16"E

SYMBOL LEGEND	
◆	SECTION CORNER
●	SET 1-1/4" YELLOW PLASTIC CAP ON 18" NO. 5 REBAR, PLS 25965
□	FND. 1-1/2" ALUM. CAP PLS 11415
△	FND. 1-1/2" ALUM. CAP PLS 25971
○	FND. YELLOW PLASTIC CAP PLS 31158

2005-005382

OWNER/APPLICANT
CORNERSTONE WINTER PARK HOLDINGS LLC
P.O. BOX 30
WINTER PARK, CO 80482

ENGINEER/SURVEYOR
 Carroll & Lange
Professional Engineers & Land Surveyors
165 South Union Blvd., Suite 156
Lafayette, Colorado 80028
PHONE: (303) 850-5200
FAX: (303) 850-0917
WWW.CARROLL-LANGE.COM

STATE OF COLORADO } ss
County of GRAND }
Filed for record this 26
day of May, 2005
at 1:17 o'clock P.M.
Recorded in Book _____ Page _____
SARA M. WILSON
Deputy